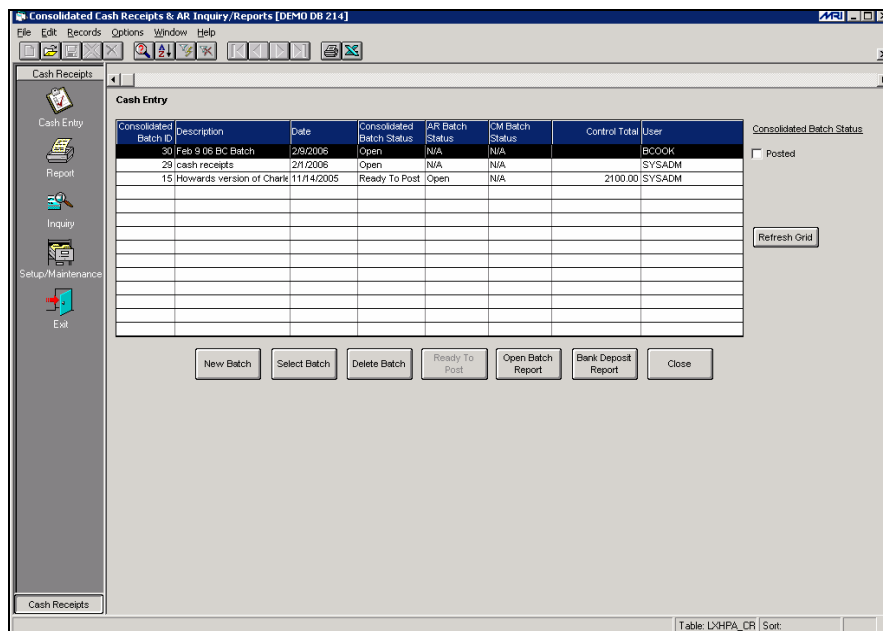


Consolidated Cash Receipts

Consolidated Cash Receipts (CCR) streamlines and greatly enhances the functionality of Cash Receipts in MRI. CCR provides a single point of entry allowing the user to input entries for both tenant in Commercial Management and non-tenant in Corporate AR and Commercial in one easy application.

Benefits

- **Profitability through Efficiency**
 - Provides quick and easy entry of combined receipts
 - Allows for a faster review and authorization process
 - Eliminates journal entries to re-allocate receipts
 - Reduces the number of entry errors
 - Provides a straightforward audit trail
- **Increased Functionality**
 - Integrates seamlessly with core MRI functionality offering control totals, batch auto numbering, full edit capabilities and MRI security for user access
 - From one view CCR allows:
 - receipts to be applied across multiple entries
 - receipts to be entered in summary or in detail with drill down
 - input of receipts and adjustments
 - application of receipts to job codes



Enter, Review, Post Batches and Print Reports from one view!

