

## Corporate AR-Recurring Charges

The Corporate AR-Recurring Charges (CRC) application greatly enhances the functionality of the core MRI Corporate AR. By automating the input and maintenance of recurring charges, this application increases the efficient management and control of these charges for Corporate AR customers.

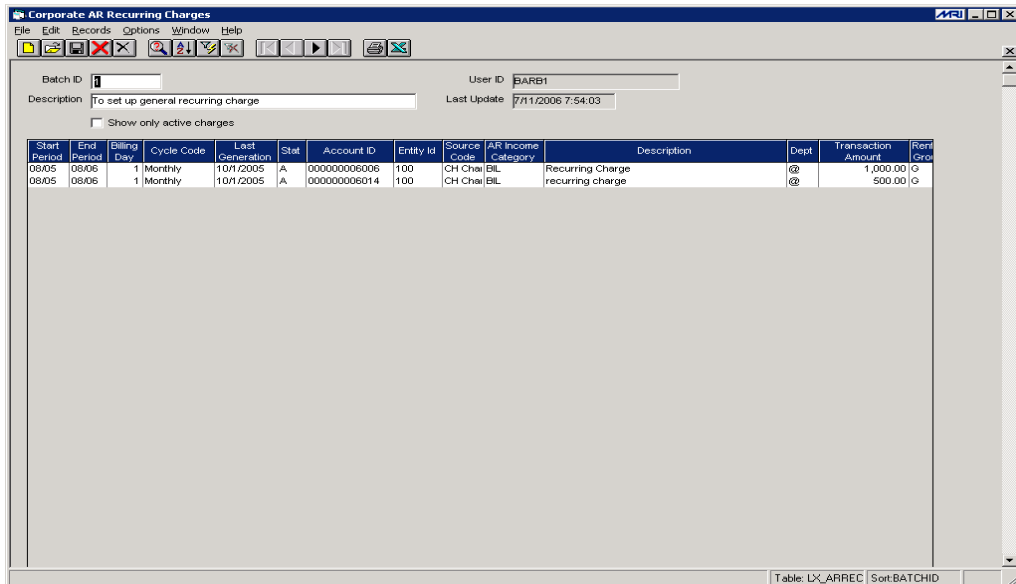
### Benefits

#### ➤ Profitability Through Efficiency

- Provides quick and easy entry of recurring charges for customers
- Allows for a faster review and authorization process
- Reduces the number and time associated with entry errors
- Provides a straightforward audit trail

#### ➤ Increased Functionality By:

- Integrating seamlessly with core MRI functionality
- Generating charges by user specific requirements including period, batch, recurring charge
- Allowing recurring charges to be set up in batches for increased control and ease of processing
- Permitting batches to be created by user, department, entity, or even functional area
- Tracking “date last charged” to ensure charges are not posted twice



The screenshot shows the 'Corporate AR Recurring Charges' application window. It includes a menu bar (File, Edit, Records, Options, Window, Help), a toolbar with various icons, and a main data area. The data area contains a table with columns for Start Period, End Period, Billing Day, Cycle Code, Last Generation, Stat, Account ID, Entity Id, Source Code, AR Income Category, Description, Dept, Transaction Amount, and Reti Gro. Two rows of data are visible, representing recurring charges for different accounts.

Start Period	End Period	Billing Day	Cycle Code	Last Generation	Stat	Account ID	Entity Id	Source Code	AR Income Category	Description	Dept	Transaction Amount	Reti Gro
08/05	08/06	1	Monthly	10/1/2005	A	000000006006	100	CH Chal	BL	Recurring Charge	@	1,000.00	G
08/05	08/06	1	Monthly	10/1/2005	A	000000006014	100	CH Chal	BL	recurring charge	@	500.00	G

Set up recurring charges easily by batch

## Corporate AR-Recurring Charges



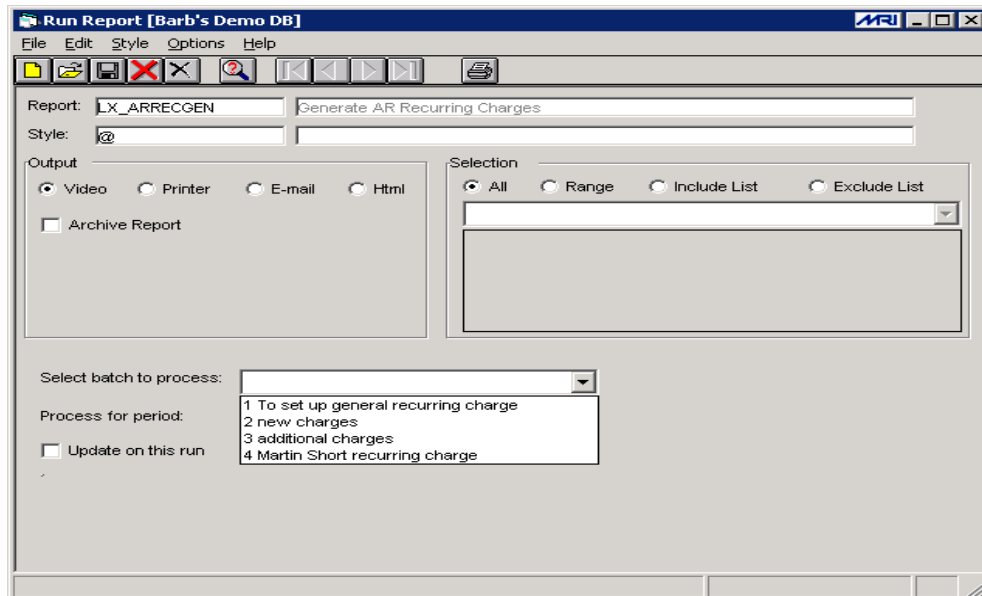
### Benefits

#### ➤ Flexible Reporting

- Provides AR Recurring Charge List to review set up charges
- Allows a report of pending charges to be printed and reviewed prior to generating charges
- Offers flexible reporting based on run time parameters selected
- Includes ability to display information about each charge including history

#### ➤ Increased Convenience By:

- Offering onetime entry of recurring charges for Corporate AR customers
- Entering and maintaining recurring charges by Account ID
- Generating charges based on specific criteria for each charge including:
  - Start and end dates, billing frequency
  - Corporate AR income categories
  - Specific day of month to bill charge
  - Taxes associated with the charge
  - Allocation of the charge to specific properties/buildings



Print recurring charges for review prior to generating and updating core MRI